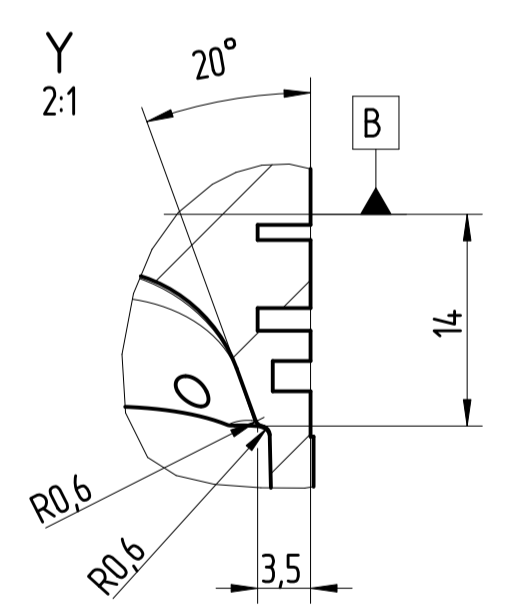
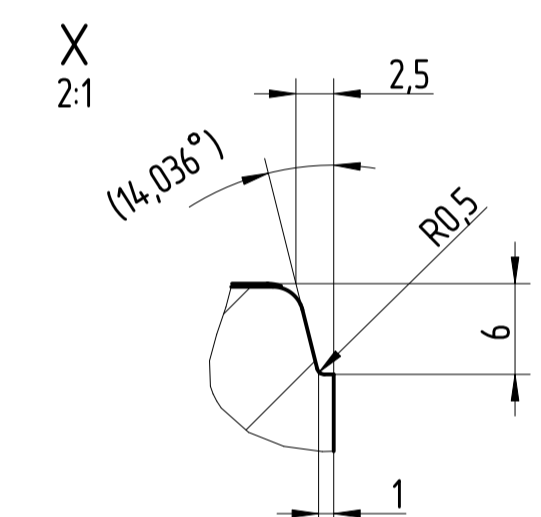
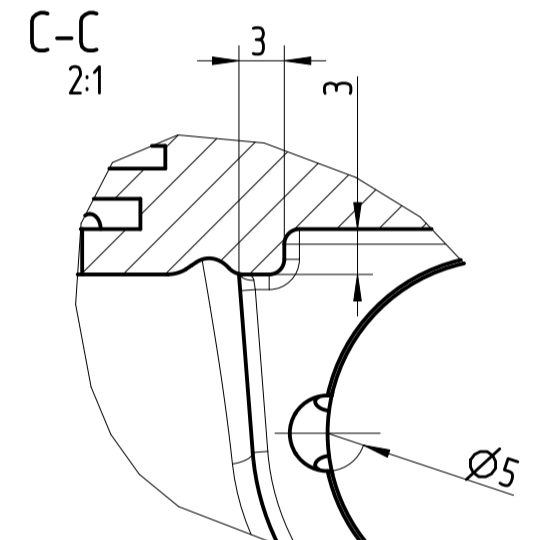
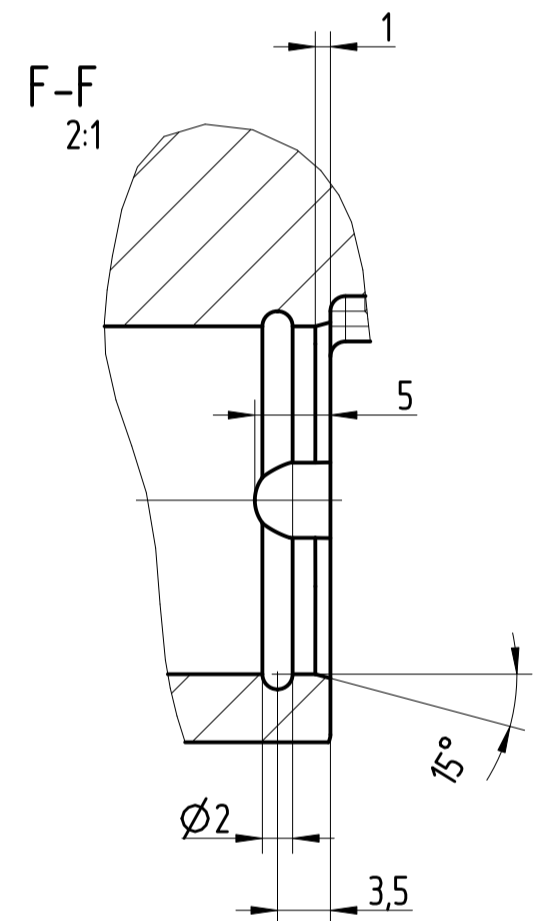
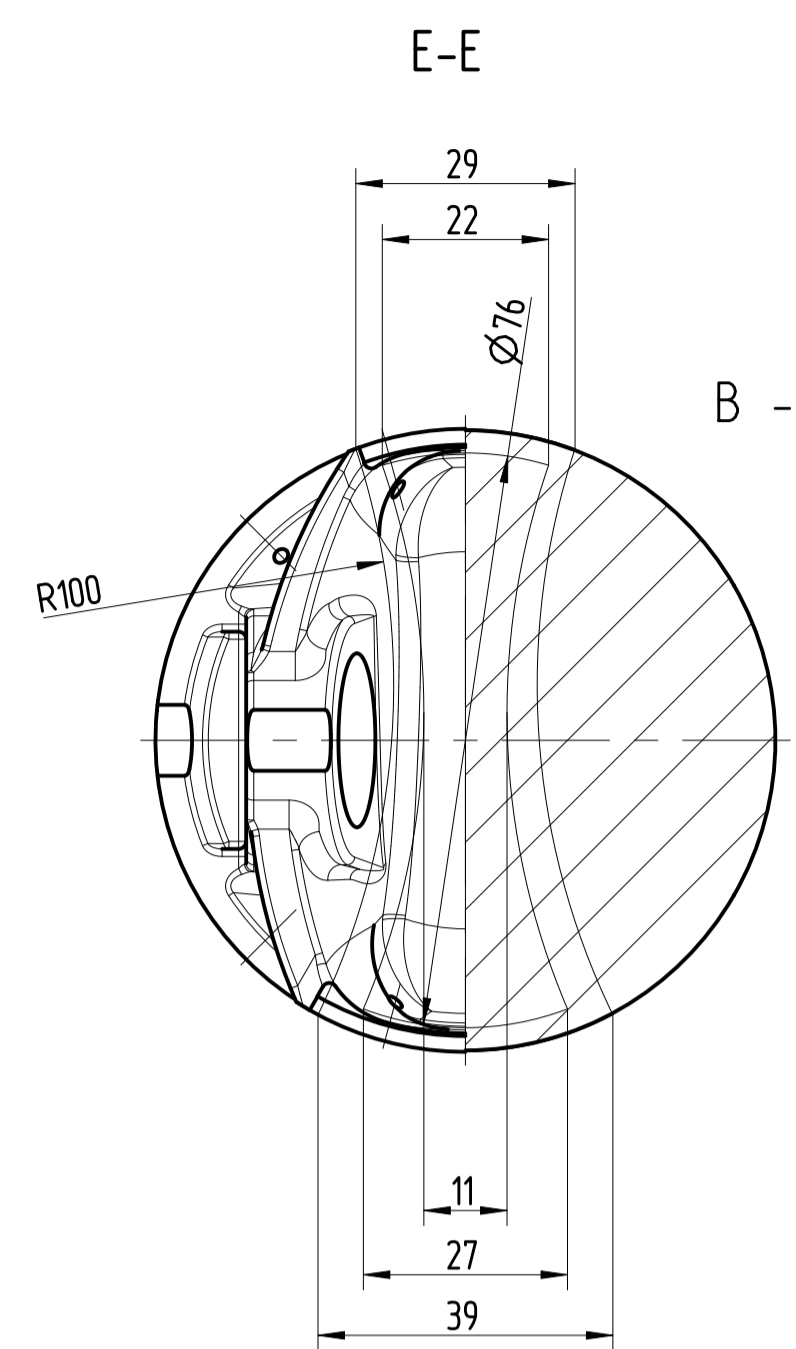
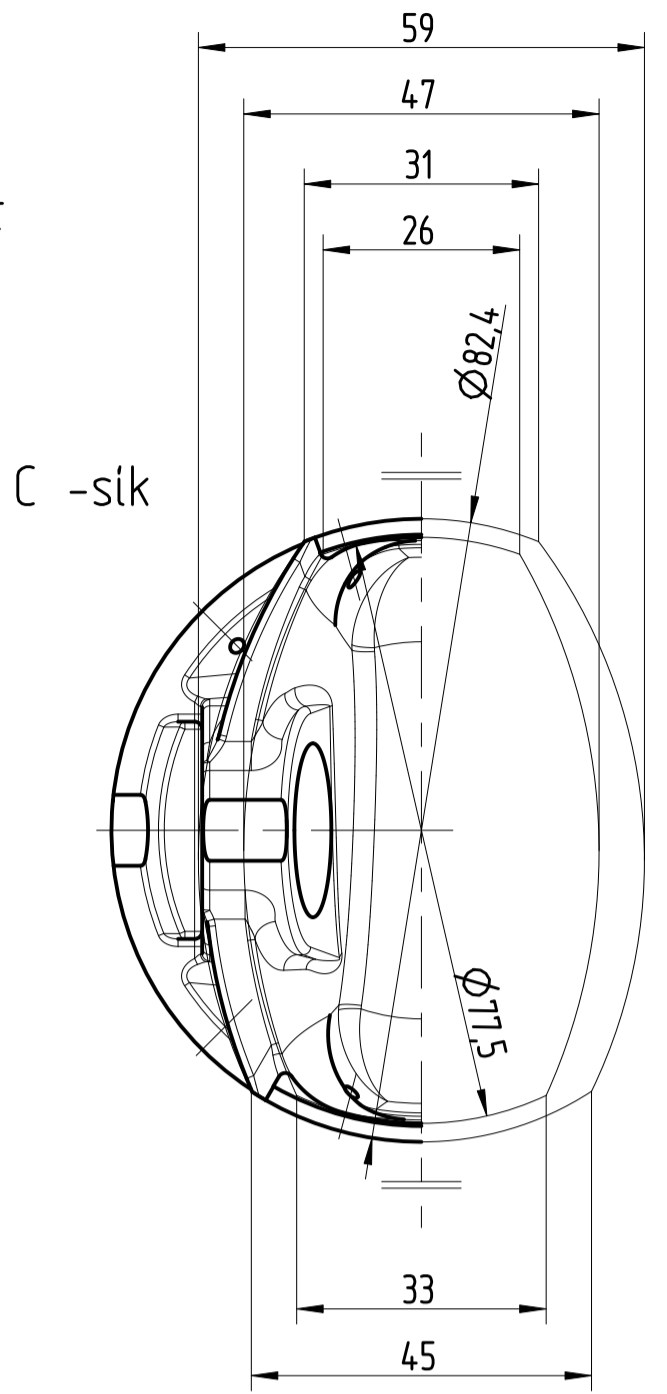


Dugattyú palást



|                    |              |   |                                       |
|--------------------|--------------|---|---------------------------------------|
| Tervező            | Péter Szalai | Széchenyi István Egyetem                | Gyártmány: R4 Otto - 1800 ccm         |
| Aláírás            |              | Egyetem                                 | Megnevezés: DUGATTYU                  |
| Ellenőr            |              | MECHATRONIKA ÉS GÉPSZERKEZETTAN TANSZÉK | Anyag: AlSi12Cu4Ni2Mg Méretarány: 1:1 |
| Dátum              |              |   | Tömeg: 0,304 kg Rajzsám:              |
| Velítési rendszer: |              |   |                                       |